

Eraser Cleaning and Burnishing brushes are made from coarse or fine grade FybRglass®, Brass, Nylon and Stainless Steel. These tools are suitable for a wide variety of cleaning, burnishing and polishing applications including electrical contact cleaning, mold cleaning, rust removal, deburring small metal parts, erasing printing marks, cleaning contact pads and fingers of printed circuit boards, and much more. Custom designed brushes for your process can be quoted upon request.

FybRglass® Erasers and Brushes



A range of refillable cleaning tools using brushes made from coarse and fine grade FybRglass®, brass, nylon, and stainless steel. Available with a plastic protective coating or all metal construction body. Sold individually or in a kit that contains five tools with brushes made from brass, stainless steel, nylon, coarse and fine FybRglass®.

Pen Type Erasers

Ordering Information

FybRglass® Eraser and Refills (With Pen Clip)

AA0120(Red) Metal Body with Fine FybRglass®
IA0380.....Fine FybRglass® refills (each)
AA0019 Fine FybRglass® refills (packet of 25)

AA0020(Blue) Metal Body with Coarse FybRglass®
IA0006..... Coarse FybRglass®refills (each)
AA0014 Coarse FybRglass® refills (packet of 25)

FybRglass® Silver Color only, (Without Pen Clip)

AA2120 Metal Body with Fine FybRglass®
AA2020 Metal Body with Coarse FybRglass®

Pen Type Erasers (Cont'd)

Ordering Information

Brass Erasers (With Pen Clip)

AA0004.....(gold) Metal Body Brass eraser
IA0370.....Brass refills (each)

Stainless Steel (With Pen Clip)

AA0003(E116) Stainless Steel Metal Body eraser
IA0360..... Stainless Steel refills (each)

Nylon Eraser (With Pen Clip)

AA0005 (E126) (black) Metal Body Nylon Eraser
IA0410 (E124) Nylon refills (each)

Metal Body Brush Kit (With Pen Clips)

AA0124 (EKIT) Kit of 5 Metal Body erasers
(one each of Stainless Steel, Fine FybRglass®, Brass, Nylon,
and Coarse FybRglass®)



**Metal Body FybRglass®
Brush (With Clip)**



Abraser Brush

Eraser Stick Brushes

Stick and Abraser brushes with plastic protective covering that is cut back as brush wears. FybRglass® brushes are manufactured from spun glass in two grades of material, coarse and fine. Brushes will not alter electrical properties or contaminate surfaces cleaned.



Ordering Information

Stick Brushes, 5-1/2" long (140mm)

AA0104 (BR0/F) Fine stick brush 1/4" OD
(6mmø), (red)
AA0022 (BR1/F) Fine stick brush 5/8" OD
(16mmø), (red)
AA0023 (BR2/F) Fine stick brush 1" OD
(25mmø), (red)
AA0130 (BR0/C).....Coarse stick brush 1/4" OD
(6mmø), (blue)
AA0129 (BR1/C).....Coarse stick brush 5/8" OD
(16mmø), (blue)
AA0128 (BR2/C).....Coarse stick brush 1" OD
(25mmø), (blue)

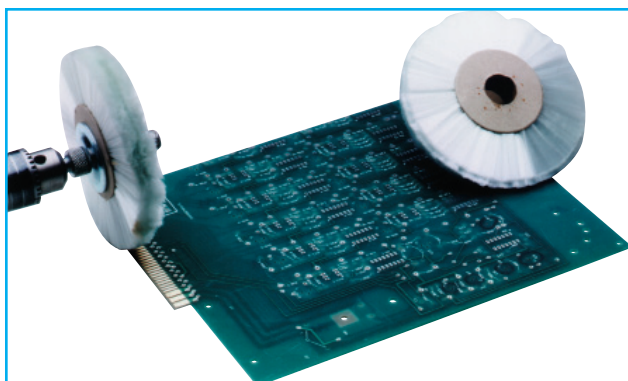
All Stick Brush Kit

AA0123 (BRKIT) One each of the stick brushes
(listed above)

Abraser brushes are 7/8" (22mm) long

AA0610 (ABR3F)Fine grade abraser (red)
AA0600 (ABR3C)Coarse grade abraser (blue)

Rotary FybRglass® Cleaning Wheel



Filled with pure spun fine grade FybRglass® fibers with no bonding agent this wheel is designed for rotary use mounted on spindles or mandrels. Wheels may be stacked together on a spindle to produce a wide face brush. The safe maximum free speed for the CP154 is 2,000 RPM.

Ordering Information

BE0002 FybRglass® Wheel
4" OD x 2.5" wide width (101mm OD x 63.5mm wide) with
3/4" arbor hole (19mmø)

All Kit



The ultimate brush kit, containing all of the industrial brushes except the ECT1, provides the opportunity to evaluate all the brushes and have on hand the solution to many cleaning, polishing, and burnishing problems at all times.

Ordering Information

AA0012 (ALLKIT)..... Kit of all brushes

BR4 Metal Cased Brushes

An adjustable metal cased brush. The brush is propelled from the case by a turn of a knob to compensate for wear.

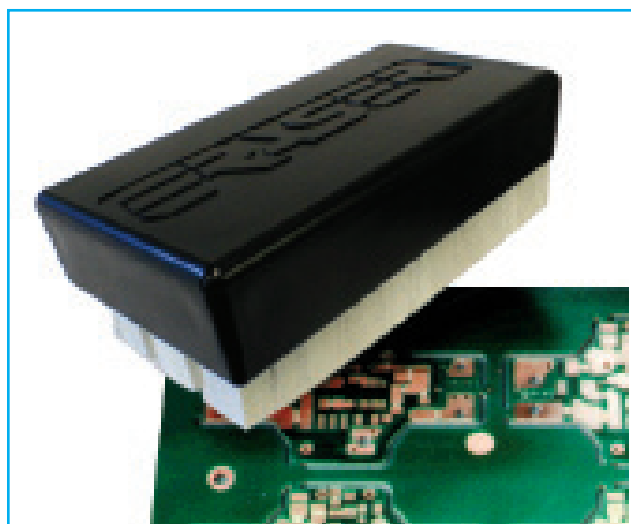


Eraser FybRglass® Brushes will not alter electrical properties or contaminate surfaces cleaned. Overall length of brush is 4" (102mm), cleaning surface is 1-3/8" x 3/8" (35mm x 9.5mm), and usable brush length is 2-3/4" (69mm).

Ordering Information (BR4 Metal Case)

AA0024 (BR4/F) Metal cased brush (red)
with fine grade material
AA0025 (BR5/F) Fine refill for BR4/F (one set)
AA0127 (BR4/C)..... Metal cased brush (blue)
with coarse grade material
AA0131 (BR5/C)..... Coarse refill for BR4/C (one set)

BR9 PCB Board Brush



Hand held power brush for cleaning and burnishing non-populated printed circuit boards or large areas.

A gentle brushing action will remove oxidation from copper and soldered surfaces. No water or solvent is required.

The cleaning surface of the BR9 measures 2" x 3.5" (51mm x 89mm).

Ordering Information

AA0026 (BR9)..... Hand brush — fine grade FybRglass®

LFTC1 Large Flexible Tubing Cutter



Designed to cut material such as tygon, radiator hose, flexible PVC, polyurethane, silicone, nylon PTFE, FEP and PFA to length, this cutter is the perfect tool for large flexible tube cutting.

Specifications

Material size 2 1/8" to 1/2"
(54mm - 12.7mm)
Max. cut lengthunlimited
Min. cut length 2.00" (50.8mm)

Ordering information

AR1431 (LFTC1) 120V, 60Hz
AR1432 (LFTC1) 230V, 50Hz
IR1817 Bushing Set
IR1819 Cutting Blade
PR1026 Flat Belt

RTC1 Rigid Tubing Cutter



Designed to cut material such as copper, aluminum and mild steel, this cutter is the perfect tool for rigid tube cutting.

Specifications

Max. Material size..... 7/16" OD (11.1mm)
Min. Material size..... 1/8" ID (3.18mm)
Larger Sizes Available by Quotation Only.

Max. cut lengthunlimited
Min. cut length 2.00" (50.8mm)

Ordering information

AR1411 (RTC1) 120V, 60Hz
AR1412 (RTC1) 230V, 50Hz
IR1832 Cutting Discs 2 Required per Machine
IR1809 Bushing Set
PR1026 Replacement Drive Belt

FTC1 Flexible Tubing Cutter



Designed to cut material such as tygon, radiator hose, flexible PVC, polyurethane, silicone, nylon PTFE, FEP and PFA to length, this cutter is the perfect tool for flexible tube cutting.

Specifications

Material size 1 1/8" to 1/4"
(28.6mm - 6.4mm)
Max. cut lengthunlimited
Min. cut length 2.00" (50.8mm)

Ordering information

AR1421 (FTC1) 120V, 60Hz
AR1422 (FTC1) 230V, 50Hz
IR1807 Bushing Set
IR1296 Cutting Blade
PR1026 Flat Belt

Eraser manufactures an array of industrial-grade cutters suitable for cutting a wide range of materials. Designed to fit your specific application, material, and budget, Eraser cutters are available in automatic and semi-automatic, bench and portable. And if we don't have one suitable for your specific needs, we can customize to fit your requirements.

WC601A Variable Speed Cutter



Designed to cut hook-up wire, solder, miniature cables, and shrink tubing to length, this cutter is perfect for any assembly environment.

Specifications

Max. material size 0.375" OD (9.5mm ϕ)
 12 AWG (2.06mm ϕ) solid copper
 Max. cut length 9,999,999"
 Min. cut length 0.1" (2.54mm)
 Tolerance under 2", +/- .01; over 2"
 1% or better dep. on material and feed rate
 Batching up to 99 programmable batches
 Kits 10 programmable kits

Ordering information

AR7121 (WC601A) 120V 60Hz, 90 PSI
 Dereeler optional (DE400 or DE700); see Dereeler section for details.

WC601B Rotary Blade Tubing Cutter



The ultimate automatic cutter provides square cuts on flexible tubing up to 1/2" OD.

Specifications

Max. material size 0.500" (12.7mm) thick
 Max. cut length 9,999,999"
 Min. cut length 0.1" (2.54mm)
 Tolerance under 2", +/- .01; over 2",
 1% or better dep. on material and feed rate
 Batching up to 99 programmable batches
 Kits up to 10 programmable kits

Ordering information

AR7131 (WC601B) 120V 60Hz
 IR1872 custom bushing, send material for sizing
 IR1871 custom bushing, send material for sizing
 Dereeler optional (DE100 or DE700); see Dereeler section for details.

WC601D Rotary Blade Tubing Cutter



This automatic cutter provides square cuts on flexible tubing up to 1 1/8" OD.

Specifications

Material 1/2" to 1 1/8" OD (12.7 to 28.5mm ϕ)
 Max. cut length 999,999.99"
 (999,999.9mm)
 Min. cut length 0.100" (2.52mm)
 Tolerances Repeatability: +/- 0.005" (0.13mm) to 5%
 of total length; dependent on material and dereeling system.
 Kitting Up to 10 programmable kits
 (depending on available memory)
 Batching Up to 99 programmable batches
 Feed Rate 10.4" (264mm) per second

Ordering Information

AR7151 (WC601D) 120V, 60Hz
 IR0977 custom bushing, send material for sizing
 Dereeler optional (DE100 or DE700); see Dereeler section for details.

WC302 Auto Wire & Tube Cutter



Fully programmable, fully electric benchtop wire & tube cutter. With programmable batching and nine variable feed rates, the WC302 is the perfect production tool for complete automation.

Specifications

Max. material size Tubing: 0.281" OD (9/32) (.713cm)
 Wire: 12 AWG (.233cm) (stranded) or 14AWG (.162cm) solid
 Max. cut length 99,999" (or 99,999cm)
 Min. cut length 0.050" (.127cm)
 Tolerance At cut lengths under 2" on most materials, the tolerance is ±0.01" (.025cm). All other cut length tolerances are 1% or better dependent on material and feed.
 Programmable length compensation of ±99% is built into the unit to accommodate unusual materials.
 Batching Up to 99 programmable

Ordering information

AR7211 (WC302) Wire & Tube Cutter 120V, 60HZ

CS800 Automatic Cutter & Stripper



Fully programmable, fully electric benchtop wire cut & strip. With programmable batching and ten variable feed rates, the CS800 is the perfect production tool for complete automation.

Specifications

Max. material size 10AWG (0.3cm)
 Max. cut length 65,530 inches, 99,999cm
 Min. cut length 0.1" (2.54mm)
 Max. strip length Up to 4.0 inches (10.2cm)-wire dependent
 Min. cut length 0.01" (2.54mm)
 Tolerance Up to 1% - wire dependent
 Batching Up to 99 programmable

Ordering information

AR7201 (CS800) Wire Cut & Strip 120V
 IR1793098 ID bushings
 IR1794116 ID bushings
 IR1795250 ID bushings
 IR1791035 ID bushings

MMC200 Multi-Material Cutter



A versatile cutter that cuts flat, round and multiple materials from 10 AWG wire to cellophane tape.

Specifications

Max. material size 0.625" (1.59cm) thick
 3.94" (10cm) wide, 10 AWG (.040cm) solid copper
 Max. cut length 99,999" (99,999.0cm)
 Min. cut length 0.100" (.25cm)
 Tolerance 1% or better dep. on material and feed rate
 Batching up to 10 programmable batches
 Max. cutting force 600 lbs.
 Feed rate up to 7,200 4" (101.6mm) pieces per hour

Ordering information

AR7161 (MMC200) 120V 60Hz, 90 PSI
 Dereeler optional (DE400 or DE700); see Dereeler section for details.

9 Parts Specifications for Wire, Cable & Tubing Cutters



WC302 Auto Wire & Tube Cutter

Optional accessories

IR5171	Optional Urethane Drive Roller
TR5169	Optional Knurled Drive Roller

CS800 Automatic Cutter & Stripper

Optional accessories

PR1222	radius blade set for 12AWG
PR1221	radius blade set for 10AWG
PR1223	radius blade set for 14AWG
AR3950	WS1 Wire Straightener for material up to 3/8" (9.5mm)

RTC1 Rigid Tubing Cutter

Optional accessories

TR0176	length stop rod
--------------	-----------------

FTC1 Flexible Tubing Cutter

Optional accessories

TR0176	length stop rod
--------------	-----------------

LFTC1 Flexible Tubing Cutter

Optional accessories

TR0176	length stop rod
--------------	-----------------

WC601A Wire & Tubing Cutter

Optional bushing sets:

IR0755	for up to 1/8" OD (3.17mmø) material [actual size is 0.156" (3.96mm)]
IR0756	for up to 1/4" OD (6.35mmø) material [actual size is 0.281" (7.14mm)]
IR0757	for up to 3/8" OD (9.5mmø) material [actual size is .406" (10.3mm)]
IR0763	for 1/8" - 3/8" (3.175mmø - 9.525mmø), send material for sizing
IR0764	for 1/16" - 1/8" (1.60mmø-3.175mmø), send material for sizing
IR0765	for 1/32"-1/16" (0.793mmø-3.175mmø), send material for sizing

MMC200 Multi-Material Cutter

Optional accessories

IR1322	upper blade for thin, flat material
--------------	-------------------------------------

Eraser offers reelers, dereelers, winders and measuring tools for a broad range of wire and cable handling needs. Manual, motorized or compensating reelers and dereelers and measuring tools work with Eraser cable processing units to provide complete combinations of material handling equipment.

CW10 Small Reeler and Dereeler



A collapsible reeler with friction clutch for a variety of wire and cable also dereels hanks or coils of material by reversing the reeling operation.

Specifications

Coil Dimension:
 Inside Diameter Variable 5" (127mm \varnothing) to 12" (305mm \varnothing)
 Unit may be set and locked for a specific diameter
 Capacity:
 Length Up to 1000' (305M) of 1/8" (3.18mm \varnothing) diameter wire or equivalent.
 Weight of Coil 55 lbs. (25 Kg) maximum

Ordering information

AR6001 (CW10) Small Reeler and Dereeler
Optional Parts
 IR0491 (Bench Stand)..... For use with reelers, dereelers and measuring meters
 IR0492 (Floor Stand) For use with reelers, dereelers and measuring meters

CW20 Medium Reeler and Dereeler



The unit has a friction clutch, making it ideal for dereeling, measuring, cutting and reeling operations by production kitters, jobbers, and electrical contractors.

Specifications

Coil Dimension:
 Inside Diameter Fixed at 12" (305mm \varnothing)
 Outside Diameter Variable up to 21" (419mm \varnothing)
 Width of Coil:
 At Inside Diameter Up to 3 1/2" (89mm)
 At Maximum Outside Diameter Up to 7 1/2" (191mm)
 Capacity:
 Length Up to 1200' (366M) of 1/4" (6.35mm \varnothing) diameter wire or equivalent.
 Weight of Coil 60 lbs. (27.3 Kg) maximum

Ordering information

AR7001 (CW20) Medium Reeler and Dereeler
Optional Parts
 IR0491 (Bench Stand)..... For use with reelers, dereelers and measuring meters
 IR0492 (Floor Stand) For use with reelers, dereelers and measuring meters

CW30 Large Reeler and Dereeler



This collapsible unit reels or dereels coils of wire or cable. An adjustable friction clutch is incorporated to prevent overruns in dereeling operations.

Specifications

Coil Dimension:
 Inside Diameter Fixed at 27" (686mm \varnothing)
 Outside Diameter Variable up to 36" (914mm \varnothing)
 Width of Coil:
 At Inside Diameter Up to 6 1/4" (159mm)
 At Maximum Outside Diameter Up to 9 1/2" (241mm)
 Capacity:
 Length Up to 300' (91M) of 3/4" (19mm \varnothing) diameter wire or equivalent.
 Weight of Coil 150 lbs. (68.2 Kg) maximum

Ordering information

AR8001 (CW30) Large Reeler and Dereeler

Measuring Meters



Designed to measure long lengths of wire, cable, flat cable and other flexible material, a digital counter records the amount of measured material.

Specifications

Measure rates up to 1,000 feet (305M) per minute
 Material size Flexible material from 1/64" (0.40mm) to 2" (50.8mm) dia. or width
 Readout feet and inches to 9,999'11" or meters and 1/10 meters to 9,999.9M
 Accuracy ±.5% depending on material and feed

Ordering information

AR0610 (WMI) Measuring meter (feet/inches) steel rollers
 AR0620 (WMM) Measuring meter (meters) steel rollers
 AR0630 (WMIU) Measuring meter (feet/inches) urethane rollers
 AR0640 (WMMU) Measuring meter (meters) urethane rollers
 AR0650 (WMIG) Measuring meter (feet/inches) abrasive coated rollers
 AR0660 (WMMG) Measuring meter (meters) abrasive coated rollers

Optional Parts

IR0491 bench stand
 IR0492 adjustable floor stand

DE300 Reel Lifter and Dereeler



Utilizing the help of leverage, these units enable two people to set up reels over 2000 lbs. (909 Kg) in weight.

Specifications

DE300 Max. reel width 31" (787mm)
 DE300 Max. reel dia 48" (1219mmØ)
 Min. reel arbor dia 1-11/16" (43mmØ)

Ordering information

AR5300 (DE300) Cable reel lifter and dereeler

DE700 Compensating Dereeler



By providing fine adjustment control on the reel payout tension, this compensating dereeler prevents material over-runs when used with wire cutters or cut and strip machines.

Specifications

Max. reel diameter 16-1/2" OD (419mmØ)
 Max. reel weight 100 lbs. (45Kg)
 Reel hub diameter 5/8" to 1-3/16" OD (16mm to 30mmØ)
 Max. reel width 10-1/4" (260mm)

Ordering information

AR0170 (DE700) Compensating dereeler

DE600 & DE600M Dereeler & Winder



When motorized, the reeler easily reels wire or cable without operator fatigue, or dereels large amounts of wire or cable with no pulling. A handle enables manual reeling and dereeling.

Specifications

DE600 Max. reel width14-3/4" (365mm)
 DE600M Max. reel width15-3/4" (390mm)
 Max. reel dia.....29" OD (737mmø)
 Reel arbor diameter3/4" to 2-1/8" (19mmø to 54mmø)

Ordering Information

AR5600 (DE600) Manual dereeler and winder
 AR5701 (DE600M) Motorized dereeler and winder,
 120V 60Hz

DE400 Bench Mounted Dereeler



Bench mounted, this unit adjusts for reel hub diameter for various sizes up to 50lb.

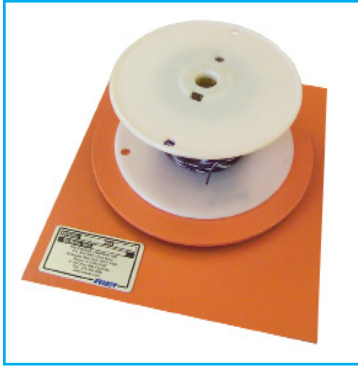
Specifications

Max. Reel dia 19" (483mmø)
 Max. Reel width..... 6" (152mm)
 Min. Reel hub dia..... 11/16" (17.5mmø)
 Max. Reel hub dia..... 6" (152mmø)
 Max. reel weight.....50 lbs. (23 Kg)
 Overall Size13" x 10" x 6"
 (330mm x 254mm x 152mm)
 Weight.....10 lbs. (4.5 kg)

Ordering information

AR3801 (DE400) Reeler and dereeler
 Optional Parts
 IR0491 Bench stand
 IR0492 Floor stand
 TR4400 Extension Kit
 Extends Reel width from 6"(152mm) to 10"(254mm)

DE100 Turntable Dereeler



The single station turntable will accommodate a reel up to 100 lbs. (45 Kg).

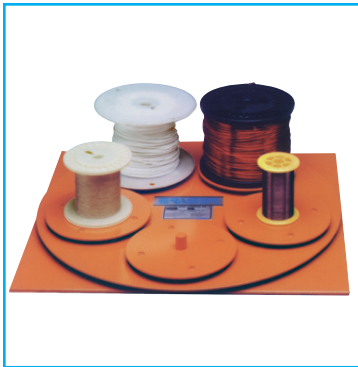
Specifications

Turntable Diameter 8" (203mmØ)
Overall Size 9" x 10-1/2" (229mm x 267mm)
Max. reel weight..... 100 lbs. (45 Kg)

Ordering information

AR0010 (DE100) Single Station Dereeler

DE500 Five Station Dereeler



This free-running, five station dereeler will hold up to five 50 lb. (23 Kg) reels and is perfect for all dereeling applications.

Specifications

Turntable Diameter 18-1/4" (464mmØ)
Individual Turntable Diameter 6-1/2" (165mmØ)
Overall Size 16-5/8" x 18-3/8" (422mm x 467mm)
Max. reel weight..... Five 50 lbs. (23 Kg) reels

Ordering Information

AR0015 (DE500) Five Station Dereeler

Wire Straightner



This unit is for use with all wire cutters, or it can be used separately. The maximum opening between rollers is 3/8" (9.5mm)

Specifications

Wire Sizes Maximum opening between the straightening rollers is 3/8" (9.5mm). Wire size is dependent on flexibility and degree of straightness.
Minimum opening between the straightening rollers is zero
Size..... 5-3/8" x 3-3/8" x 2-3/4" (136mm x 85mm x 70mm)
Weight 3 1/4 pounds

Ordering information

AR3950 (WS1) Wire Straightner

Extruded Wire & Cable Strippers

CS800 Automatic Cutter & Stripper



Fully programmable, fully electric benchtop wire cut & strip. With programmable batching and ten variable feed rates, the CS800 is the perfect production tool for complete automation.

Specifications

Max. material size10AWG(2.95mmø)
 Max. cut length 9,999,999"
 Min. cut length0.1" (2.54mm)
 Max. strip length4" (101.6 mm)
 Min. cut length01"(2.54mm)
 Tolerance1%
 Batching.....up to 67 programmable

Ordering information

AR7201 (CS800) Wire Cut & Strip 120V
 IR1793098 ID bushings
 IR1794116 ID bushings
 IR1795250 ID bushings
 IR1791035 ID bushings

C100S Rotary Wire Stripper



This unit features convenient adjustment knobs for strip length and blade depth adjustments that are easily made while this wire stripper and twister is running.

Specifications

Max. wire size over insulation..... 0.228" OD (5.79mmø)
 Min. wire size over insulation0.031" OD (0.079mmø)
 Max. strip length 1-1/2" (38mm)
 Min. strip length with standard strip length stop varies from 3/16" (4.7mm) on a 28 AWG (0.33mmø) wire to 5/16" (7.9mm) on a 14 AWG (1.63mmø) wire

Ordering information

AR2171 (C100S) 120V 60Hz
 AR2172 (C100S) 220/240V 50Hz European plug
 See page 27 for wire guide selection and optional parts.

C200 & C300 Wire Strippers



Strips most insulation from solid and stranded wires, Teflon, P.T.F.E., PVC, nylon, rubber, KEL-F, miniature coax, coaxial cables, shielded wires and cables.

Specifications

Max. wire size over insulation..... 0.265" OD (6.73mmø)
 Min. wire size over insulation0.028" OD (0.071mmø)
 dep. on wire rigidity
 Max. conductor dia 0.219" OD (5.5mmø)
 Max. strip length (w. strip stop)..... 2-1/2" (63.5mm)
 Max. strip length (w/o strip stop)..... dep. on wire or cable
 Min. strip length.1/32" (.79mm), dep. on insulation thickness

Ordering information

AR4901 (C200) single head stripper, 120V 60Hz
 AR4902 (C200) single head stripper, 220/240V 50Hz
 AR9501 (C300) triple head stripper, 120V 60Hz
 AR9502 (C300) triple head stripper, 220/240V 50Hz
 See page 27 for wire guide selection and optional parts.

LS10, LSR10 & LSS10 Cable Strippers



Hand operated with blades that are quickly changed and adjusted, these strippers provide a clean strip in one simple motion.

Specifications

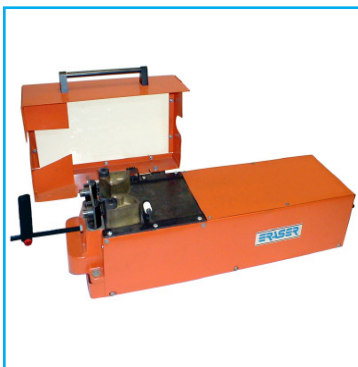
Max. diameter of conductor (all)..... 1.120" OD (30.5mmø)
Max. diameter of jacket (LS10) 1.25" OD (31.8mmø)
Max. diameter of jacket (LSR10) 1.06" OD (26.9mmø)
Max. strip length*(all)..... 3 3/8" (86.4mm)

Ordering information

AR0240 (LS10)standard cable clamps
AR0260 (LSR10)rubber covered cable clamps to prevent marking the cable
See page 25 for die blade selection.

**Strip length maximum is for one cycle of the machine. Dependent on cable type and size, strip length may be increased by cycling the machine more than once.*

LSA20 & LSAR20 Cable Stripper



These air-operated units are for precise wire and cable stripping, with blade options available to cover most applications.

Specifications

Max. diameter of conductor 1.20" OD (30.5mmø)
Max. diameter of jacket..... 1.25" OD (31.8mmø)
Max. strip length* 3 3/8" (86.4mm)
Operation air operated, 90 P.S.I.

Ordering information

AR6800 (LSA20)..... standard serrated cable clamps
AR6700 (LSAR20)..... with rubber covered cable clamps to prevent marking the cable

Optional Parts

PR0003 air filter, regulator and lubricator
PR3623 six-foot air hose with quick disconnect
See page 25 for die blade selection.

**Strip length maximum is for one cycle of the machine. Dependent on cable type and size, strip length may be increased by cycling the machine more than once.*

BTS1 Thermal Wire Stripper



With a variable temperature setting, this stripper is ideal for use on solid and stranded wires, and small cables.

Specifications

Wire size up to 1/2" OD (12.7mmø)
Min. wire size.....36 AWG (0.13mmø)
Max. strip length 1-1/2" (38mm),
or unlimited with optional 90° element adapters

Ordering information

AR0111 (BTS1) 120V 60Hz
AR0112 (BTS1) 220V/240V 50Hz

Optional Parts

IR1479 ...right angle adaptor kit for unlimited strip lengths
IR1473 one pair of replacement elements
IR1474 small die element set (.050", .080", .102" dia.)
IR1475 large die element set (.120", .140", .160" dia.)
IR1491 foot switch
AR6701.....FE1 Fume Extractor, 120V 50/60Hz
AA0004.....Brass Eraser Brush to clean elements

HTS1 & HTS2 Thermal Wire Stripper



Lightweight, hand-held tools are cradle or foot switch activated with low cost replaceable elements.

Specifications

Wire size (HTS1)1/2" to 43AWG (12.7 - 0.056mmø)
Strip length up to 1" (25.4mm)

Ordering information

AR0121 (HTS1F) ... Foot switched activated, 120V 50/60Hz
AR0122 (HTS1F)Foot switch activated, 220V 50/60Hz
AR0131 (HTS1C) Cradle activated, 120V 50/60Hz
AR0132 (HTS1C) Cradle activated, 220V 50/60Hz

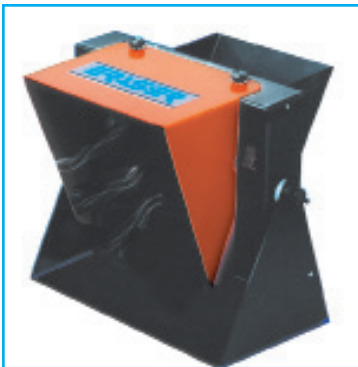
Specifications

Wire size (HTS2) 18 to 43AWG (1.02 - 0.056mmø)
Strip length up to 1" (25.4mm)

Ordering information

AR0141 (HTS2F) Foot switch activated, 120 50/60Hz
AR0142 (HTS2F) Foot switch activated, 220 50/60Hz
AR0151 (HTS2C) Cradle activated, 120 50/60Hz
AR0152 (HTS2C) Cradle activated, 220V 50/60Hz
All units have IR5023 un-notched elements installed
See page 26 for elements and optional parts.

FE1 Fume Extractor



Used to extract fumes or smoke during thermal stripping, soldering or de-soldering operations.

Specifications

Airflow 105 CFM (49 liters per second) at 60Hz
Filter.....Activated carbon-impregnated

Ordering information

AR6701 (FE1)fume extractor, 120V 50/60Hz

Optional Parts

IR8943Pack of 3 replacement filters

Magnet/Enamel Wire Strippers

L2AS Bench Wire Stripper



For fast, clean removal of most film insulation from round wire, including enamel, Formvar, ML, armored polythermaleze, and epoxy.

Specifications

Wire size 8 to 4 AWG (3.25mm to 5.18mm ϕ)
 Max. strip length 1-1/2" (38mm),
 1-5/16" (33.3mm) with strip length stop

Ordering information

AR2071 (L2AS) 120V 60Hz
 AR2072 (L2AS) 220/240V 50Hz, European plug

See page 28 for insert selection.

L2S Bench Wire Stripper



In addition to removing film insulation, the L2S can deflash wires and clean pins on transformers and coils.

Specifications

Wire size 29 to 8 AWG (0.28mm to 3.25mm ϕ)
 Max. strip length 3-1/2" (89mm),
 1-5/16" (33.3mm) with strip length stop
 Component lead diameter 0.0112" to 0.114" OD
 (0.28mm to 2.90mm ϕ)
 Max. cleaning length 2-1/2" (63.5mm)
 Close-up cleaning flush with component body or
 length stop permits precise cleaning of only part of lead

Ordering information

AR2051 (L2S) 120V 60Hz
 AR2052 (L2S) 220/240V 50Hz, European plug

See page 28 for insert selection.

L1 Magnet Wire Stripper



The L1 wire stripper removes film insulations including enamel, Formvar, ML, armored poly-thermaleze, and epoxy from round wires.

Specifications

Max. material size 29-13AWG(.28-1.82mm ϕ)
 Max. strip length 3-1/2" (89mm)
 [1-5/16" (33.3mm) with strip length stop]
 Cleaning length Up to 2 1/2" (63.5mm)

Ordering information

AR2041 (L1) 120V, 60Hz
 AR2042 (L1) 220V

See page 28 for insert selection.

PL3S Portable Wire Stripper



The PL3S uses a high-speed rotating insert on a flexshaft to strip insulation from the surface of round wires.

Specifications

Wire size 29 to 14 AWG (0.28mm to 1.63mm ϕ)
 Max. strip length 1-3/8" (34.9mm)
 no strip length stop available

Ordering information

AR2061 (PL3S) 120V 60Hz
 AR2062 (PL3S) 220/240V 50Hz, European plug

See page 28 for insert selection.

RT2S Magnet Wire Stripper



In addition to insulation stripping, the RT2S can clean and remove oxidation from leads as small as 0.001" in diameter.

Specifications

Max. wire size28 AWG (0.33mmø)
 Min. wire size48 AWG (0.03mmø)
 Strip lengthunlimited
 Close-up stripping within 1/8" to 3/16"
 (3.2mm to 4.76mm) dep. on size of coil body
 Component lead diameter..... 0.0012" to 0.013" OD
 (0.03 to 0.33mm)
 Component lengths..... infinite, will clean to within
 1/8" (3.2mm) of component body

Ordering information

AR0221 (RT2S) 120V 60Hz
 AR0222 (RT2S) 220/240V 50Hz, European plug
 Contact customer service or website for wheel selection.

R1S Magnet Wire Stripper



Fybrglass wheels make stripping quick and easy by softening wire insulation; wire wheels available for tougher applications.

Specifications

Max. wire size24 AWG (0.33mmø)
 Min. wire size45 AWG (0.046mmø)
 Max. strip lengthunlimited
 Close-up stripping
 A size wheels...within 5/16" (8mm) dep. on coil body size
 B size wheels within 3/8" (10mm) of coil body
 BEV size wheels..... within 5/16" (8mm) of coil body

Ordering information

AR2131 (R1S) 120V 60Hz
 AR2132 (R1S) 220/240V 50Hz, European plug
 Contact customer service or website for wheel selection.

DCF Multi-voltage Wire Strippers



These variable-speed units are ideal for production and repair stripping of armatures, coils, chokes, transformers, relays, and solenoids.

Specifications for DCF1, DCF2/3, DCF4

Model Wire size
 DCF1 35 to 15 AWG (0.14mm to 1.45mmø)
 DCF2/3 32 to 12 AWG (0.20mm to 2.06mmø)
 DCF4 29 to 9 AWG (0.28mm to 2.90mmø)
 Strip length
 without strip length stop.....0 to 2-1/2" (64mm)
 with strip length stop 3/32" to 1-9/16"
 (2.38 to 39.69mm)
 with motor armature drilled infinite
 max. wire size 13 AWG (1.83mmø)
 Power source multi-voltage 120/220/240V 50/60Hz

Ordering information for DCF1

AR4500 (DCF1)stripper, drilled multi-volt power unit
 AR4501 (DCF1) stripper, multi-voltage power unit
 AR4300 (DCF2/3)stripper, drilled, multi-volt power unit
 AR4301 (DCF2/3) stripper, multi-voltage power unit
 AR4400 (DCF4)stripper, drilled multi-volt power unit
 AR4401 (DCF4) stripper, multi-voltage power unit

IR7000multi-voltage power unit and bench holder only

DCFR Stripper for Magnet Wire



Uses a rotating carbide rasp head to strip square, rectangular, flat magnet or enamel wire insulation.

DCFR Specifications

DCFR Single Voltage UnitsWire sizes
 Wire size Strip to max. square section 3/4"(19mm)
 Strip lengthunlimited
 DCFR Power source..... multi-voltage 120/220/240V
 50/60Hz

Ordering information for DCFR

AR4801 (DCFR) stripper, with multi-voltage power supply unit

DSP1 Stripping Pot



These units use Dip Strip to chemically remove insulation from almost all magnet and enamel wires, with no wire damage.

Specifications

Stripping pot
 Temperature range 100° to 800°F
 (37.8° to 426.6°C) internal
 Int. dimensions 3" dia. (76.2mmø) x 2-1/2"
 (57.1mm) deep
 Overall size (vessel only) 6" (152.4mm) high
 x 6-3/16" dia. (157.1mmø)

Dip strip
 Melting temperature..... 500°F (260°C)
 Normal use temperature..... 700° to 750°F
 (371° to 399°C)
 Max. operating temperature..... 820°F (438°C)

DSP2 & DSP3 Stripping Pots



The temperature control feedback offers precise settings for critical stripping applications and repeatability.

Ordering information

AR1211 (DSP1) 120V 50/60Hz, standard temp. control
 AR1212 (DSP1) 220/240V 50/60Hz,
 standard temp. control
 AR1221 (DSP2) 120V 50/60Hz, feedback temp. control
 AR1222 (DSP2) 220/240V 50/60Hz,
 feedback temp. control
 AR1232 (DSP3) 220/240V 50/60Hz, high output

DSP8 Magnet Wire Stripper



The DSP8 uses Dip Strip to chemically remove insulation from almost all magnet and enamel wires, with no wire damage.

Specifications

Stripping pot
 Temperature range ... 100° to 800°F (37.8° to 426°C) internal
 Overall size (vessel only) 11" (200mm)

Dip strip
 Normal use temperature.... 700° to 750°F (371° to 399°C)
 Max. operating temperature..... 820°F (438°C)

Ordering information

AR1252 (DSP8) 240V, 50/60Hz

USP1 Ultrafine Magnet Wire Stripper



The USP1 uses a low temperature Ultrafine Stripper solution to strip magnet wire up to 50 AWG.

Specifications

Stripping pot
 Temperature range 70° to 220°F (21° to 104°C) internal
 Int. dimensions 3" dia. (76.2mmø)
 x 2-1/2" (57.1mm) deep
 Overall size (vessel only) 6" (152.4mm) high
 x 6-3/16" dia. (157.1mmø)

Dip strip
 Normal use temperature... 145° to 230°F (63° to 110°C)
 Max. operating temperature..... 212°F (100°C)
 Wire size 50 to 40 AWG (.025mmø to .079mmø)

Ordering information

AR1241 (USP1) 120V 50/60Hz
 AR1242 (USP1) 220/240V 50/60Hz, European plug

Optional Parts for DSP 1, 3, 3. 8, & USP1

*BR1301 Dip Strip, 2 lb. bag (908g)
 *BR1302 Dip Strip, 1 lb. bag (454g)
 BR1340 Ultrafine Stripper, US pin
 BR1440 Dip Clean 2, 1 pint
 BR1441 Dip Clean 2, 1 gallon
 PR1403 Dip Strip Neutralizer Kit
 TR1409 ... Replacement Neutralizer for Kit 1 lb. bag (454g)

**Items are considered hazardous materials and must be shipped separately from other product orders.*

Model 824

Cutter head (one required)

- RI3040 for use on single level semi-rigid
- RI3041 for use on two level semi-rigid
- RI3043 for use on two level coax
- RI3042 for use on single level coax
- RI3044 for use on two level coax (braid exposed)
- RI3045 for use on three level coax
- RI2047 for strip length of 0.070" (1.78mm)
or less between blades
- RI2056 for UV or V size hole

Optional Parts

- RI5000 additional standard battery w/o charger
- RI2040 additional standard battery w/110V trickle charger
- RI0056 AC to DC power supply 120V 60Hz
- RI0057 AC to DC power supply 220/230V 50Hz,
European plug
- RP5710 trickle charger, 110V 60Hz
- RP2036 trickle charger, European plug
- RI0091 rapid charger, 110V 60Hz
- RI6711 replacement blade
- RI3339 replacement blade
- RI6713 Set of 3 replacement blades

Model 1256

Cutter head (one required)

- RI4040 for use on single level semi-rigid
- RI4041 for use on two level semi-rigid
- RI4042 for use on single level coax
- RI4043 for use on two level coax
- RI4044 for use on two level coax (braid exposed)
- RI4045 for use on three level coax
- RI2057 for strip length of 0.070" (1.78mm)
or less between blades
- RI2053 for UV or V size hole
- RI1040 quick release coupling

Optional Parts

- RI6711 replacement blade
- RI3339 replacement blade
- RI6713 Set of 3 replacement blades

HTS1 & HTS2 Thermal Wire Strippers

Optional Parts

- IR5023 replacement set un-notched elements
- IR1399 small die element set (22, 24, 26, 28, 30AWG)
- IR1405 large die element set (14, 16, 18, 20AWG)
- AR6701 FE1 fume extractor, 120V 50/60Hz
- AA0004 Brass Eraser brush to clean elements

LS10, LSR10, LSS10, LSA20 & LSAR20

Die blade selection (one required)

- | | <i>Diameter of die</i> |
|--------|---------------------------------------|
| IR1702 |parallel blades |
| IR1728 | < 0.030" OD (< 0.76mmø) |
| IR1728 |0.029-0.042" OD (0.74-1.07mmø) |
| IR1728 |0.043-0.050" OD (1.09-1.27mmø) |
| IR1707 |0.063-0.074" OD (1.60-1.88mmø) |
| IR1708 |0.075-0.102" OD (1.91-2.59mmø) |
| IR1709 |0.103-0.123" OD (2.62-3.12mmø) |
| IR1710 |0.124-0.142" OD (3.15-3.61mmø) |
| IR1711 |0.143-0.183" OD (3.63-4.65mmø) |
| IR1712 |0.184-0.208" OD (4.67-5.28mmø) |
| IR1713 |0.209-0.237" OD (5.31-6.02mmø) |
| IR1714 |0.238-0.285" OD (6.05-7.24mmø) |
| IR1715 |0.286-0.327" OD (7.26-8.31mmø) |
| IR1716 |0.328-0.370" OD (8.33-9.40mmø) |
| IR1717 |0.371-0.416" OD (9.42-10.57mmø) |
| IR1718 |0.417-0.448" OD (10.59-11.38mmø) |
| IR1719 |0.449-0.495" OD (11.40-12.57mmø) |
| IR1720 |0.496-0.558" OD (12.60-14.17mmø) |
| IR1721 |0.559-0.620" OD (14.20-15.75mmø) |
| IR1722 |0.621-0.714" OD (15.77-18.14mmø) |
| IR1723 |0.715-0.792" OD (18.16-20.12mmø) |
| IR1724 |0.793-0.870" OD (20.14-22.10mmø) |
| IR1725 |0.871-0.948" OD (22.12-24.08mmø) |
| IR1726 |0.949-1.026" OD (24.10-26.06mmø) |
| IR1727 |1.027-1.120" OD (26.09-28.45mmø) |
| IR1728 |custom blade set |

Optional Parts

- IR8371table and clamp assembly
- IR1507 length stop

C100S

Wire guide selection (one required)

	<i>Outside diameter of wire</i>
IR8701	0.233-0.216" (5.92-5.49mm)
IR8702	0.215-0.208" (5.46-5.28mm)
IR8704	0.203-0.201" (5.16-5.11mm)
IR8705	0.200-0.196" (5.08-4.98mm)
IR8706	0.195-0.191" (4.95-4.85mm)
IR8707	0.190-0.186" (4.83-4.72mm)
IR8708	0.185-0.181" (4.69-4.59mm)
IR8709	0.180-0.175" (4.57-4.45mm)
IR8710	0.174-0.168" (4.42-4.27mm)
IR8711	0.167-0.164" (4.24-4.17mm)
IR8712	0.163-0.156" (4.14-3.96mm)
IR8713	0.155-0.151" (3.94-3.84mm)
IR8714	0.150-0.144" (3.81-3.66mm)
IR8715	0.143-0.139" (3.63-3.53mm)
IR8716	0.138-0.135" (3.51-3.43mm)
IR8717	0.134-0.131" (3.40-3.33mm)
IR8718	0.130-0.120" (3.30-3.05mm)
IR8719	0.119-0.115" (3.02-2.92mm)
IR8720	0.114-0.111" (2.90-2.82mm)
IR8721	0.110-0.106" (2.79-2.69mm)
IR8722	0.105-0.101" (2.67-2.57mm)
IR8723	0.100-0.096" (2.54-2.44mm)
IR8724	0.095-0.091" (2.41-2.31mm)
IR8725	0.090-0.084" (2.29-2.13mm)
IR8726	0.083-0.077" (2.11-1.96mm)
IR8727	0.076-0.073" (1.93-1.85mm)
IR8728	0.072-0.068" (1.83-1.73mm)
IR8729	0.067-0.062" (1.70-1.57mm)
IR8730	0.061-0.057" (1.55-1.45mm)
IR8731	0.056-0.050" (1.42-1.27mm)
IR8732	0.049-0.041" (1.24-1.04mm)
IR8733	0.040-0.037" (1.02-0.94mm)
IR8734	0.036-0.034" (0.91-0.86mm)
IR8735	0.033-0.030" (0.84-0.76mm)
IR8736	0.029-0.026" (0.74-0.66mm)
IR8737	0.025-0.020" (0.64-0.51mm)

Optional parts

IR8190	complete set of 37 wire guides in plastic box
IR4655	standard 50° blade with pivot pin
IR4660	blade for thin or film insulation
IR7978	special short blade for very fine fragile wires

K8A

Blade selection (one required)

IR0318	strips wire 38-8 AWG (0.10-3.25mmØ) for hard or thin insulation
IR0319	strips wire 11-15 AWG (2.31-1.45mmØ)
IR0321	strips wire 16-20 AWG (1.30-0.81mmØ)
IR0323	strips wire 25-28 AWG (0.46-0.33mmØ)
IR0324 ...	custom stripping blades, send material for sizing
IR0337	strips wire 38-8 AWG (0.10-3.25mmØ) or up to 3/8" OD (9.5mmØ) for thick or slippery insulation
NR3210.....	custom diamond tipped blades

Optional Parts

PR0003	air filter, regulator and lubricator
--------------	--------------------------------------

C200 & C300

Wire guide selection

	<i>Outside diameter of wire</i>
IR2301	0.022-0.020" OD (0.56-0.51mmØ)
IR2302	0.029-0.023" OD (0.74-0.58mmØ)
IR2303	0.036-0.030" OD (0.91-0.76mmØ)
IR2304	0.046-0.037" OD (1.17-0.94mmØ)
IR2305	0.056-0.047" OD (1.42-1.19mmØ)
IR2306	0.064-0.057" OD (1.63-1.45mmØ)
IR2307	0.072-0.065" OD (1.83-1.65mmØ)
IR2308	0.083-0.073" OD (2.11-1.85mmØ)
IR2309	0.095-0.984" OD (2.41-2.13mmØ)
IR2310	0.105-0.096" OD (2.67-2.44mmØ)
IR2311	0.119-0.106" OD (3.02-2.69mmØ)
IR2312	0.130-0.120" OD (3.30-3.05mmØ)
IR2313	0.143-0.131" OD (3.63-3.33mmØ)
IR2314	0.155-0.144" OD (3.94-3.66mmØ)
IR2315	0.167-0.156" OD (4.24-3.96mmØ)
IR2316	0.185-0.168" OD (4.70-4.27mmØ)
IR2317	0.199-0.186" OD (5.05-4.72mmØ)
IR2318	0.215-0.200" OD (5.46-5.08mmØ)
IR2319	0.228-0.216" OD (5.79-5.49mmØ)
IR2320	0.240-0.229" OD (6.10-5.82mmØ)
IR2321	0.251-0.241" OD (6.38-6.12mmØ)
IR2322	0.260-0.252" OD (6.60-6.40mmØ)

Optional Parts

IR0085	Set of all 22 wire guides
IR1071	titanium nitrate coated replacement blade
IR8631	set of two replacement carbide blades
IR8632	set of six replacement carbide blades
IR0703	complete faceplate assembly
TR0705	replacement alignment tool for C200 and C300

L1, L2S, L2AS, L4, L4A, PL3S

Insert selection (one required)

Wire Size	Heavy Duty Grade Inserts			Machine Used On
	Concave Face	Flat Face	Bullet Nose	
29-24 AWG (0.28-0.51mmø)	L30HC-IR1951	L30HF-IR1961	L30HB-IR1981	L1, L2S, PL3S, L4
24-20 AWG (0.51-0.81mmø)	L35HC-IR1952	L35HF-IR1962	L35HB-IR1982	
20-16 AWG (0.81-1.30mmø)	L31HC-IR1953	L31HF-IR1963	L31HB-IR1983	
15-13 AWG (1.45-1.83mmø)	L33HC-IR1954	L33HF-IR1964	L33HB-IR1984	
13-11 AWG (1.83-2.31mmø)	L38HC-IR1955	L38HF-IR1965	L38HB-IR1985	L2S, L4
11-9 AWG (2.31-2.90mmø)	L34HC-IR1956	L34HF-IR1966	L34HB-IR1986	
9-8 AWG (2.90-3.25mmø)	L37HC-IR1957	L37HF-IR1967	N/A	
8-6 AWG (3.25-4.11mmø)	L39HC-IR1958	L39HF-IR1968	N/A	L2AS, L4A, IR0106
5-4 AWG (4.62-5.18mmø)	L40HC-IR1959	L40HF-IR1969	N/A	

Wire Size	Carbide Tipped Inserts			Diamond Tipped Insert	Machine Used On
	Concave Face	Flat Face	Bullet Nose	Flat Face	
29-24 AWG (0.28-0.51mmø)	L30CC-IR9007	L30CF-IR9008	L30CB-IR9009	N/A	L1, L2S, PL3S
24-20 AWG (0.51-0.81mmø)	L35CC-IR9017	L35CF-IR9018	L35CB-IR9019	N/A	
20-16 AWG (0.81-1.30mmø)	L31CC-IR9027	L31CF-IR9028	L31CB-IR9029	N/A	
15-13 AWG (1.45-1.83mmø)	L33CC-IR9037	L33CF-IR9038	L33CB-IR9039	L33DF-IR9040	
13-11 AWG (1.83-2.31mmø)	L38CC-IR9047	L38CF-IR9048	L38CB-IR9049	N/A	L2S, IR0104, L4
11-9 AWG (2.31-2.90mmø)	L34CC-IR9057	L34CF-IR9058	N/A	L34DF-IR9060	
9-8 AWG (2.90-3.25mmø)	N/A	N/A	N/A	N/A	
8-6 AWG (3.25-4.11mmø)	N/A	N/A	N/A	N/A	L2AS, L4A, IR0106
5-4 AWG (4.62-5.18mmø)	N/A	N/A	N/A	N/A	

From our patented Glo-Ring™ infrared heating technology to a wide range of ceramic heating units for industrial applications, Eraser offers a comprehensive line of heating equipment. All provide effective heating performance that is quick, quiet and energy efficient. The Glo-Ring is perfect for heat shrinking, plastic tube bending, soldering, adhesive curing, solder preforms, and butt welding.

Triple Element Bench Glo-Ring



For shrinking long length of heat shrink tubing and other applications, this bench Glo-Ring has roller guides to keep the work piece centered within the heating elements.

Specifications

Heat sourcequartz encapsulated heating elements
Temperature range adjustable to 1,500°F (815°C)
Heating elementsopen and close around material using hand switch or foot pedal

Ordering information

AH2711 (Triple Element Glo-Ring)..... 120V 60Hz
IH0129 (Foot activation switch) ... For bench Glo-Ring units

Elements and guards are sold separately from unit.

Single Element Bench Glo-Ring



This unit is ideal for smaller production applications that require the stability and convenience of a bench machine. Perfect for clean room use.

Specifications

Heat sourcequartz encapsulated heating elements
Temperature range adjustable to 1,500°F (815°C)
Heating elementsopen and close around material using hand switch or foot pedal
(see "Continuous Elements" section for size options)

Ordering information

AH2401 (Single Element Glo-Ring)..... 120V 60Hz
AH2402 (Single Element Glo-Ring)..... 220/240V 50Hz,
European plug

Elements and guards are sold separately from unit.

Hand-Held Glo-Ring



Utilizing the same Glo-Ring technology as the triple- and single-element units, this portable tool can be taken to the production site for added convenience.

Specifications

Heat sourcequartz encapsulated heating elements
Temperature range adjustable to 1,500°F (815°C)
Heating elementsopen and close around material using hand switch
(see "Continuous Elements" section for size options)

Ordering information

AH2001 (Hand-Held Glo-Ring).....120V 50/60Hz,
with temp. control
AH2002 (Hand-Held Glo-Ring)..... 220/240V 50/60Hz,
European plug, with temp. control
AH1901 (Hand-Held Glo-Ring).....120V 50/60Hz
AH1902 (Hand-Held Glo-Ring)..... 220/240V 50/60Hz,
European plug

Elements and guards are sold separately from unit.

Available in various configurations, all Glo-Ring elements are designed for long-life and optimum performance. Intermittent are for hand-unit use; continuous for bench models.

Elements & Wire Guards (1/2" & 1")



Ordering information

Round, continuous, one pair

- IH6515 1/2" (12.7mm), 120V 50/60Hz
- IH6516 1/2" (12.7mm), 220/240V 50/60Hz
- IH5511 1" (25.4mm), 120V 50/60Hz
- IH5521 1" (25.4mm), 220/240V 50/60Hz

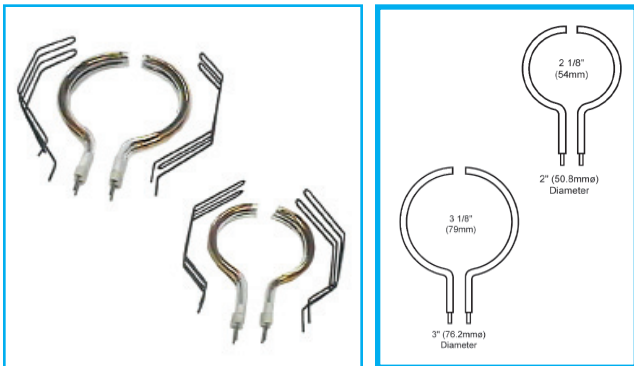
Round, intermittent, one pair

- IH3511 1/2" (12.7mm), 120V 50/60Hz
- IH4511 1" (25.4mm), 120V 50/60Hz
- IH4521 1" (25.4mm), 220/240V 50/60Hz

Round, wire guards, one pair

- IH6517 for use with 1/2" element
- IH3551 for use with 1" element

Elements & Wire Guards (2" & 3")



Ordering information

Round, continuous, one pair

- IH5512 2" (50.8mm), 120V 50/60Hz
- IH5522 2" (50.8mm), 220/240V 50/60Hz
- IH5513 3" (76.2mm), 120V 50/60Hz
- IH5523 3" (76.2mm), 220/240V 50/60Hz

Round, intermittent, one pair

- IH4512 2" (50.8mm), 120V 50/60Hz
- IH4522 2" (50.8mm), 220/240V 50/60Hz
- IH4513 3" (76.2mm), 120V 50/60Hz
- IH4523 3" (76.2mm), 220/240V 50/60Hz

Round, wire guards, one pair

- IH3552 for use with 2" element
- IH3553 for use with 3" element

Elements & Wire Guards (3" Straight)



Ordering information

Straight, intermittent, one pair

- IH0130 3" (76.2mm) without gold, 120V 50/60Hz

Guards not available for straight elements.

Designed to work with a wide range of wire types and sizes, Eraser's line of twisters offers the highest quality and durability available. Whether used for an intensive industrial application or in a lighter production environment, our machines deliver consistent, quality twists each time.

WT40 Automatic Wire Twister



Using holders that are custom made for each application, the WT40 can twist together several large wires, or pre-terminated wires.

Specifications

Max. dia. of all wiresnot to exceed equiv. of three
14 AWG (1.63mm ϕ) wires
Max. twist length 20' (6.096M)
Max. twist quantity 9,999 twists per cycle
Twist speedvariable up to 26 turns per second

Ordering information

AR4240 (WT40)120V 50/60Hz

G10S Wire Twister



This bench unit is for twisting pre-stripped stranded wires, strands of two or more wires, or wrapped shields on coaxial cables.

Specifications

Wire size 26 to 12 AWG (0.41mm to 2.06mm ϕ)
based on twisting insert (see below)
Max. twist length 1" (25.4mm) dep. on spacers used
Twisted pairs not to exceed two 18 AWG (1.02mm ϕ) wires
G10S comes with one set of three twist length spacers and one wire guide.

Ordering information

AR2161 (G10S) 120V 60Hz
AR2162 (G10S) 220/240V 50 Hz European plug

Optional Parts

Twisting Inserts
IR8227 for wire 26 to 22 AWG (0.41 to 0.64mm ϕ)
IR8228for wire 24 to 18 AWG (0.51mm to 1.02mm ϕ)
IR8229 for wire 18 to 12 AWG (1.02 to 2.06mm ϕ)
TR8223replacement spacer 1/2" (12.7mm) thick
TR8224replacement spacer 1/4" (6.35mm) thick
TR8225replacement spacer 1/8" (3.18mm) thick
IR8220 replacement wire guide

DCFT & DCFH Wire Twister



A lightweight, quick and easy to use hand held wire twister for twisting pairs or strands of wires.

Specifications

DCFTTwist two wires 12 AWG (2.06mm ϕ)
DCFT Twist length 2-1/2" (0.64mm ϕ)

DCFHTwist two wires 20 AWG (0.81mm ϕ)
DCFH Twist lengthunlimited
Hook length 3/8" x 1/4" (10mm x 6.35mm)
Power source multi-voltage 120/220/240V 50/60Hz

Ordering information

AR4601 (DCFT) stripper, multi-voltage power unit
AR4701 (DCFH) stripper, multi-voltage power unit

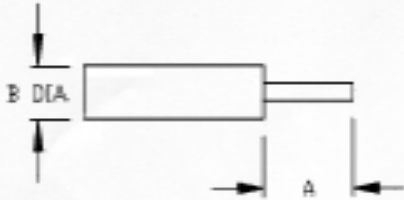
IR7000multi-voltage power unit and bench holder only

For: Bench Hand

To Process your stripping head order accurately please provide the following:

- The actual strip dimensions, the outside diameter (O.D.) of your cable and any tolerance requirements (if applicable)
- Use the appropriate diagram based on the number of strip levels required
- Specify inch or metric
- Please fill out your company's name, sign and date the form and fax it to 315-454-3090

If you have any questions concerning this form, please contact The Eraser Company at **800-724-0594**

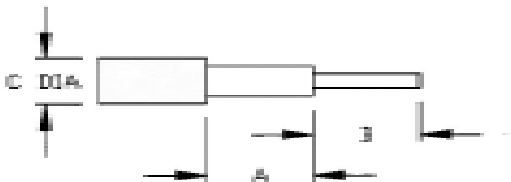


*A = _____

*B = _____ Dia.

**ONE LEVEL
COAX OR
SEMI-RIGID**

*Strip Dimensions



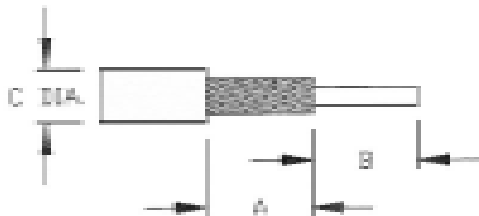
*A = _____

*B = _____

C = _____ Dia.

**TWO LEVEL
(DIELECTRIC EXPOSED)
COAX OR SEMI-RIGID**

*Strip Dimensions



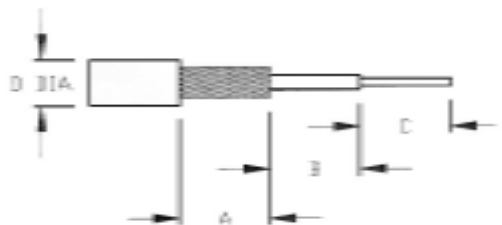
*A = _____

*B = _____

C = _____ Dia.

**TWO LEVEL
(BRAID EXPOSED)
COAX**

*Strip Dimensions



*A = _____

*B = _____

*C = _____

D = _____ Dia.

**THREE LEVEL
COAX OR JACKETED
SEMI-RIGID**

*Strip Dimensions

Tolerance Required = +/- . _____ /Inch or Metric (Circle One)

Company Name: _____

Customer Signature: _____

Date: _____

The Eraser Company, Inc.

PO Box 4961 / Oliva Drive

Syracuse, NY 13221, USA

Phone: (315) 454-3237 / Fax: (315) 454-3090

Website: www.eraser.com

E-mail: info@eraser.com



CUSTOM PRODUCTS SPECIFICATION FORM 33

AVIONICS / AEROSPACE · AUTOMOTIVE · CONSUMER APPLIANCE · ELECTRICAL / ASSEMBLY · MEDICAL / DENTAL · ELECTRONICS · UTILITIES · PLASTICS · RECREATIONAL · TELECOMMUNICATIONS

The Eraser Company has provided solutions for many companies by modifying our existing products or designing a one-of-a-kind product tailored to your specifications using our Product Customization Service. We can help you too! Simply complete the form, include details of your production problem, and fax or mail it to the attention of our Custom Products Department.

Company Name _____

Contact _____ Email Address _____

Phone _____ Fax _____

Address _____

City _____ State _____ Zip _____ Country _____

If you require a signed Confidentiality Agreement before providing information about your project, please download a copy of the Non-Disclosure Agreement found on our website at www.eraser.com. If the form is acceptable please fill in the blanks and fax or mail it to us. We will sign and return it to you immediately.

If this agreement is not acceptable and you have your own agreement, please fax, mail, or e-mail a copy to us for our review.

1. Please provide us with as MUCH DETAIL as possible regarding your Application, Idea or Concept.

Multiple horizontal lines for providing details regarding the application, idea, or concept.

2. Please provide a Separate Page with your Specification Drawing of the Application, Idea or Concept.

3. If you have Material Samples or Part Prototypes, please include them and send to:

The Eraser Co. Inc.
Product Customization Department
123 Oliva Drive
Mattydale, NY 13211

